



Solidigm™ CLI Storage Tool

Installation Guide

May 2026
Revision 011

Solidigm Confidential

SOLIDIGM™

Revision History

| Revision | Software Version | Description | Revision Date |
|----------|------------------|--|---------------|
| 001 | 1.0 | <ul style="list-style-type: none"> Initial Release | March 2022 |
| 002 | 1.1 | <ul style="list-style-type: none"> Updated System Requirements | May 2022 |
| 003 | 1.2 | <ul style="list-style-type: none"> Document Changes | July 2022 |
| 004 | 1.4 | <ul style="list-style-type: none"> Updated ESXi Version Support | Dec. 2022 |
| 005 | 1.5 | <ul style="list-style-type: none"> Added ESXi 8.0 Support | Jan. 2023 |
| 006 | 1.9 | <ul style="list-style-type: none"> Updated ESXi Restart Requirement | July 2023 |
| 007 | 1.10 | <ul style="list-style-type: none"> Removed ESXi Installation Restart Requirement | Sept. 2023 |
| 008 | 1.12 | <ul style="list-style-type: none"> ESXi - Change package from VIB to Component | March 2024 |
| 009 | 1.13 | <ul style="list-style-type: none"> Added Ubuntu 22.04, 24.04 Support Updated requirements for ESXi | June 2024 |
| 010 | 2.3 | <ul style="list-style-type: none"> Added ESXi 8.0.u3 Support | May 2025 |
| 011 | 3.0 | <ul style="list-style-type: none"> Added ESXi 9.0, 9.1 Support Updated ESXi section | May 2026 |

All product plans, roadmaps, specifications, and product descriptions are subject to change without notice. Nothing herein is intended to create any express or implied warranty, including without limitation, the implied warranties of merchantability, fitness for a particular purpose, and non-infringement, or any warranty arising from course of performance, course of dealing, or usage in trade. The products described in this document may contain design defects or errors known as "errata," which may cause the product to deviate from published specifications. Current characterized errata are available on request. Contact your Solidigm representative or your distributor to obtain the latest specifications before placing your product order. For copies of this document, documents that are referenced within, or other Solidigm literature, please contact your Solidigm representative. All products, computer systems, dates, and figures specified are preliminary based on current expectations, and are subject to change without notice. © Solidigm. "Solidigm" is a trademark of SK hynix NAND Product Solutions Corp (d/b/a Solidigm). "Intel" is a registered trademark of Intel Corporation. Other names and brands may be claimed as the property of others. Solidigm may make changes to specifications and product descriptions at any time, without notice. Designers must not rely on the absence or characteristics of any features or instructions marked "reserved" or "undefined." Solidigm reserves these for future definition and shall have no responsibility whatsoever for conflicts or incompatibilities arising from future changes to them. The information here is subject to change without notice. Do not finalize a design with this information.

Contents

| | | |
|-----|---|----|
| 1 | Introduction..... | 4 |
| 1.1 | Requirements..... | 4 |
| 1.2 | Additional Installer Notes..... | 4 |
| 2 | Windows Installation and Startup..... | 5 |
| 2.1 | Installing the Solidigm™ Storage Tool..... | 5 |
| 2.2 | Launching the Solidigm™ Storage Tool..... | 6 |
| 2.3 | Uninstalling the Solidigm™ Storage Tool..... | 6 |
| 3 | Linux Installation and Startup..... | 9 |
| 3.1 | Viewing RPM Metadata..... | 9 |
| 3.2 | RHEL Command Line Installation and Removal..... | 10 |
| 3.3 | Ubuntu Command Line Installation and Removal..... | 10 |
| 4 | ESXi Installation and Startup..... | 12 |
| 4.1 | Installing the Solidigm™ Storage Tool..... | 12 |
| 4.2 | Launching the Solidigm™ Storage Tool..... | 12 |
| 4.3 | Uninstalling the Solidigm™ Storage Tool..... | 13 |

1 Introduction

This document provides guidance for installing the Solidigm™ Storage Tool (SST) software for the Windows, Linux, and ESXi operating systems.

1.1 Requirements

The SST is supported on the following:

- Operating systems on x64 Architecture:
 - Windows
 - Windows Server 2016, 2019, 2022, 2025
 - Windows 10, 11
 - Linux
 - Red Hat Enterprise Linux (RHEL) 8.0, 8.2, 8.3, 8.4, 9.x, 10.x
 - CentOS 8.0, 8.2, 8.3, 8.4, 9.0
 - SLES 12, 15
 - Ubuntu 16.04, 18.04, 20.04, 22.04, 24.04, 26.04
 - ESXi
 - Unsigned VIB
 - ESXi 7.x
 - ESXi 8.0, 8.0.u1, 8.0.u2, 8.0.u3, 9.0, 9.1
 - Signed Component
 - ESXi 8.0.u2, 8.0.u3, 9.0, 9.1
- Available space of 400MBs

1.2 Additional Installer Notes

Review the following notes regarding SST Requirements:

- Earlier OS Versions not listed in supported list are generally expected to work but are not actively validated and not officially supported.

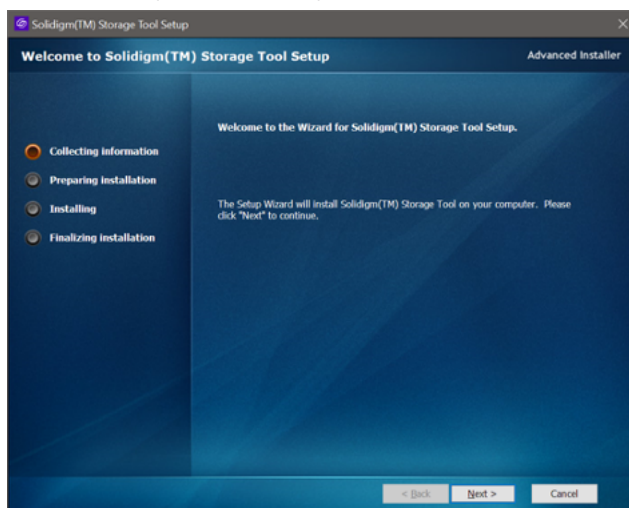
2 Windows Installation and Startup

Download the Windows version of Solidigm™ Storage Tool (SST) and save it to the system with the SSDs you will be configuring with the SST.

2.1 Installing the Solidigm™ Storage Tool

To install the Solidigm™ Storage Tool software:

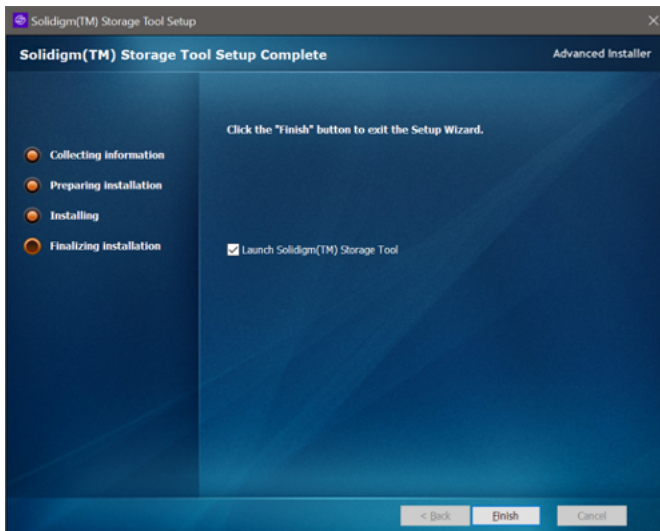
1. Double-click on the downloaded executable file to open the self-extracting archive.
This extracts the installer .EXE file and the Solidigm™ Storage Tool User's Guide.
2. If Windows User Account Control prompts to confirm with "Do you want to allow this app to make changes to your device?"
Click Yes
3. Double-click on the installer .EXE file. This opens the Welcome Screen
4. Click Next
Accept the terms of the End-User License Agreement and click Next.
The End-User License Agreement displays.
User must accept the license to proceed.



- Click Next
5. Click Install on Ready to Install screen.
6. If Windows User Account Control prompts to confirm with "Do you want to allow this app to make changes to your device?". Click Yes.
7. Tool installs in:

- c:\Program Files\Solidigm\Solidigm(TM) Storage Tool

The installation folder is also added to Environment Variables -PATH.
It can be run from any directory.

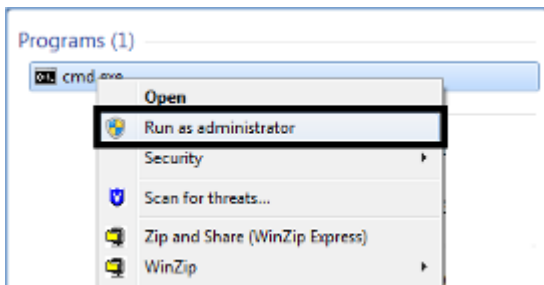


8. Click Finish

2.2 Launching the Solidigm™ Storage Tool

To launch the SST software, do the following:

1. Type cmd in the Windows search field to show the cmd.exe program
2. Right click to open the menu and select Run as administrator.



3. In the MS_DOS prompt window, you can either type change to the directory where the files were exacted (for example, C:\Program Files\Solidigm\Solidigm(TM) Storage Tool\)
4. Run the sst command.
Launch it as a single command by supplying the command and parameters immediately following the executable name.

```
sst show -ssd
```

For a description of the command options and features, see the Solidigm™ Storage Tool User Guide.

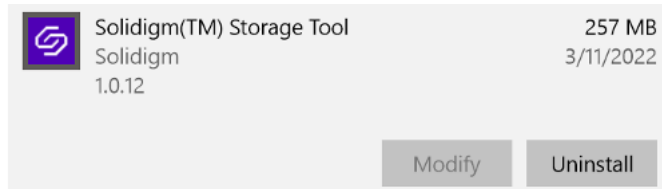
2.3 Uninstalling the Solidigm™ Storage Tool

Use the Windows Control Panel to uninstall the SST software.

Follow these steps to uninstall the SST using Windows Uninstaller:

1. At the Control Panel, click "Program and Features,"

2. Highlight Solidigm™ Storage Tool in the list of programs.



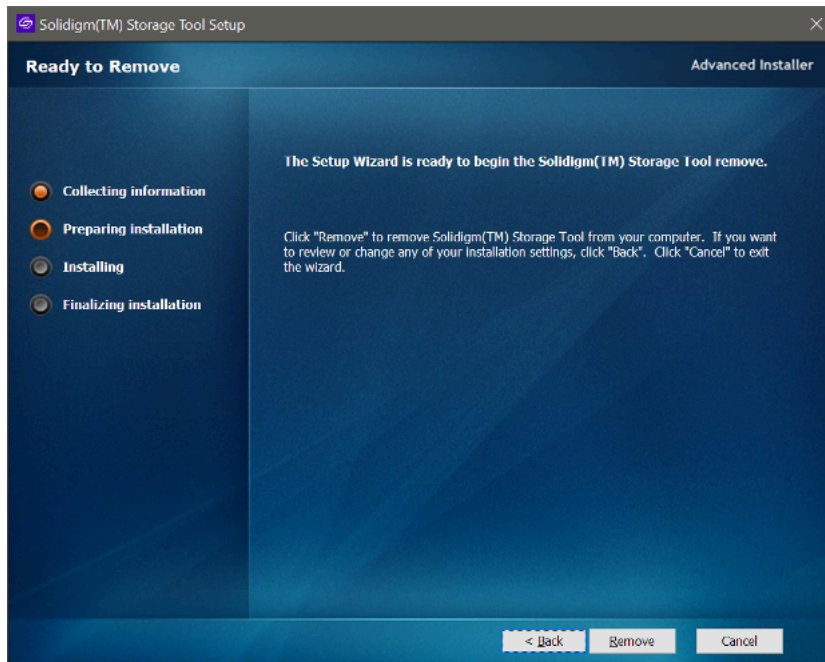
3. Click Uninstall.
If prompted to, allow Administrator privileges to uninstaller. Follow these steps to uninstall.

Follow these steps to uninstall the SST using Windows Uninstaller:

1. Double-click on the downloaded executable file to open the self-extracting archive.
This extracts the installer .EXE file and the SST User Guide.
2. If Windows User Account Control prompts you with "Do you want to allow this app to make changes to your device?", select Yes.
3. Double-click on the installer .EXE file; this opens the Welcome Screen.
4. Click Next



5. Click Remove



6. Click Remove. If prompted, Allow Admin access for User Access Control. This will show the uninstall progress screen.
7. Click Next.
8. If prompted, Select Yes or No to restart the computer for the changes to take effect, then click Finish.

3 Linux Installation and Startup

Download the Linux version of the Solidigm™ Storage Tool and copy it to a directory

When the installer finishes:

- The sst executable file will be placed in /usr/bin directory.
- The libraries used by SST will be placed in /usr/lib/sst directory.

3.1 Viewing RPM Metadata

View the RPM metadata with the command:

```
sudo rpm -q -i -p <package_name>.rpm
```

The following shows an example of the output:

```
Name : intelmas
Version : 1.0.5.400
Release : 0
Architecture: x86_64
Install Date: (not installed)
Group : default
Size : 266816072
License : "Intel(R) NSG End User Software License Agreement"
Signature : RSA/SHA1, Mon 23 Dec 2019 08:42:21 PM EST, Key ID 4994c89d5d1bc6fe
Source RPM : intelmas-1.0.5.400-0.src.rpm
Build Date : Mon 23 Dec 2019 08:41:43 PM EST
Build Host : linuxDevhdu16
Relocations : /
Packager : "Intel(R) Corporation"
Vendor : "Intel(R) Corporation"
URL : https://downloadcenter.intel.com/product/35125/Memory-and-Storage
Summary : "Intel(R) Memory And Storage Tool
Description :
"Intel(R) Memory And Storage Tool
The
```

Intel(R) Memory And Storage Tool provides firmware update capability as well as reading and setting many configuration settings on Intel's SSD Family of products."

3.2 RHEL Command Line Installation and Removal

To install SST using the command line, use the RPM utility to run the following command:

```
sudo rpm -ivh <package_name>.rpm
```

The following shows a sample output:

| |
|--|
| sudo rpm -ivh sst-1.0.12-0.i386.rpm |
| warning: sst-1.0.12-0.i386.rpm: Header V4 RSA/SHA1 Signature, key ID 35c760e5: NOKEY |
| Verifying... ##### [100%] |
| Preparing... ##### [100%] |
| Updating / installing... |
| 1:sst-1.0.12-0 ##### [100%] |

After the tool is installed, run the following command to get information:

```
sudo rpm -q -i sst
```

To remove an RPM package, run the following command:

```
sudo rpm -e sst
```

3.3 Ubuntu Command Line Installation and Removal

To install the SST using the command line, use the DPKG utility to run the following command:

```
sudo dpkg -i <package_name>.deb
```

The following shows a sample output:

| |
|---|
| remlab@ctool_Ubuntu_16:~/Validation\$ sudo dpkg -i sst_1.0.12-0_amd64.deb |
| sudo: unable to resolve host ctool_Ubuntu_16.04 |
| Selecting previously unselected package sst. |
| (Reading database ... 251800 files and directories currently installed.) |

| |
|--|
| Preparing to unpack sst_1.0.12-0_amd64.deb ... |
| Unpacking sst (1.0.12-0) ... |
| Setting up sst (1.0.12-0) ... |
| After the tool is installed, run the following command to get information: |
| <code>sudo dpkg -l sst</code> |

To remove an RPM package, run the following command:

```
sudo dpkg -r sst
```

4 ESXi Installation and Startup

Download the ESXi version of SST and copy it to a directory on an ESXi host (i.e. /tmp).

When the installer finishes the executable file and associated libraries will be placed in /opt/solidigm/intelmas directory.

4.1 Installing the Solidigm™ Storage Tool

Starting in 2024 VMWare will only sign Component packages but not VIBs. So the signed package is component. Signed components also have size limitations. Unsigned VIB is provided to provide full SST firmware updates

Component:

```
esxcli software component apply -d /tmp/package_name.zip
```

VIB:

```
esxcli software vib install -v <package name>.vib --no-sig-check
```

Helpful Hints:

1. To change acceptance level
Login to your ESXi Host. You will need to set your Host's acceptance level to "CommunitySupported". Run the following command to see what your host's acceptance level is set to:

```
> esxcli software acceptance get
PartnerSupported
```

Run the following command to set your Host's acceptance level to "CommunitySupported":

```
> esxcli software acceptance set --level=CommunitySupported
Host acceptance level changed to 'CommunitySupported'.
```

2. Copy component or VIB to /tmp folder and install using the command below from root directory to avoid VIB download error.

```
esxcli software vib install -v /tmp/<package name>.vib --no-sig-check
```

4.2 Launching the Solidigm™ Storage Tool

To launch the SST software, take these steps:

1. Login to the ESXi host.
2. Change directory to
Component: `cd /opt/solidigm/bin`
VIB: `cd /opt/solidigm/sst`
3. Run the sst command
Launch with a single command by supplying the command and parameters immediately following the executable name.
Due to VMWare requirements for signing, sst may be targeted with sh extension.

```
VIB: ./sst show -ssd
```

```
Component: ./sst.sh show -ssd
```

4. For a description of the command options and features, see the SST User Guide.

4.3 Uninstalling the Solidigm™ Storage Tool

To uninstall the SST software, take the steps:

1. Login to the ESXi host.
2. Run the following esxcli command:

Component:

```
esxcli software component remove -n solidigm-storage-tool
```

VIB:

```
esxcli software vib remove -n solidigm-storage-tool
```